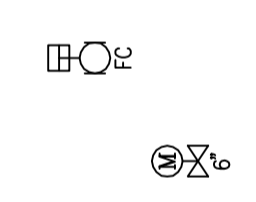
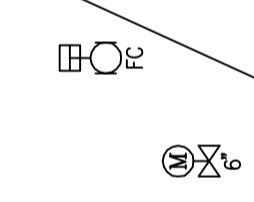
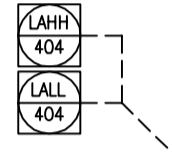
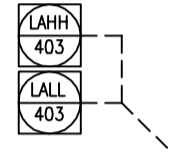
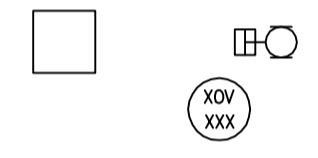


因篇幅所限,本流庭图中气功网不再细画,每台气功网的表示方法均如下图所示.





3.



自 LPG 罐
3387
45-02-05-002

61-8"-LPG-02-389(C,30)

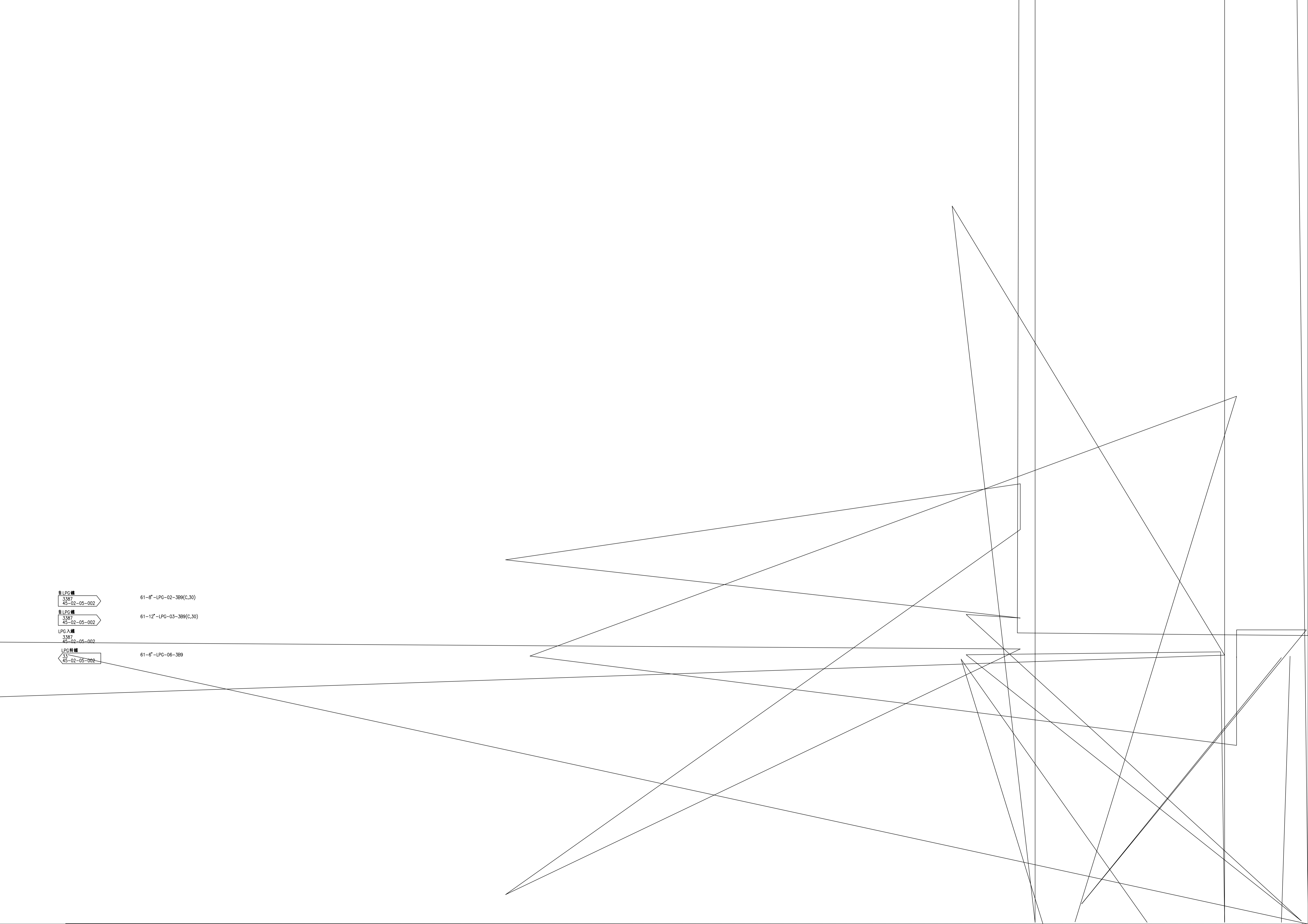
自 LPG 罐
3387
45-02-05-002

61-12"-LPG-03-389(C,30)

LPG 入罐
3387
45-02-05-002

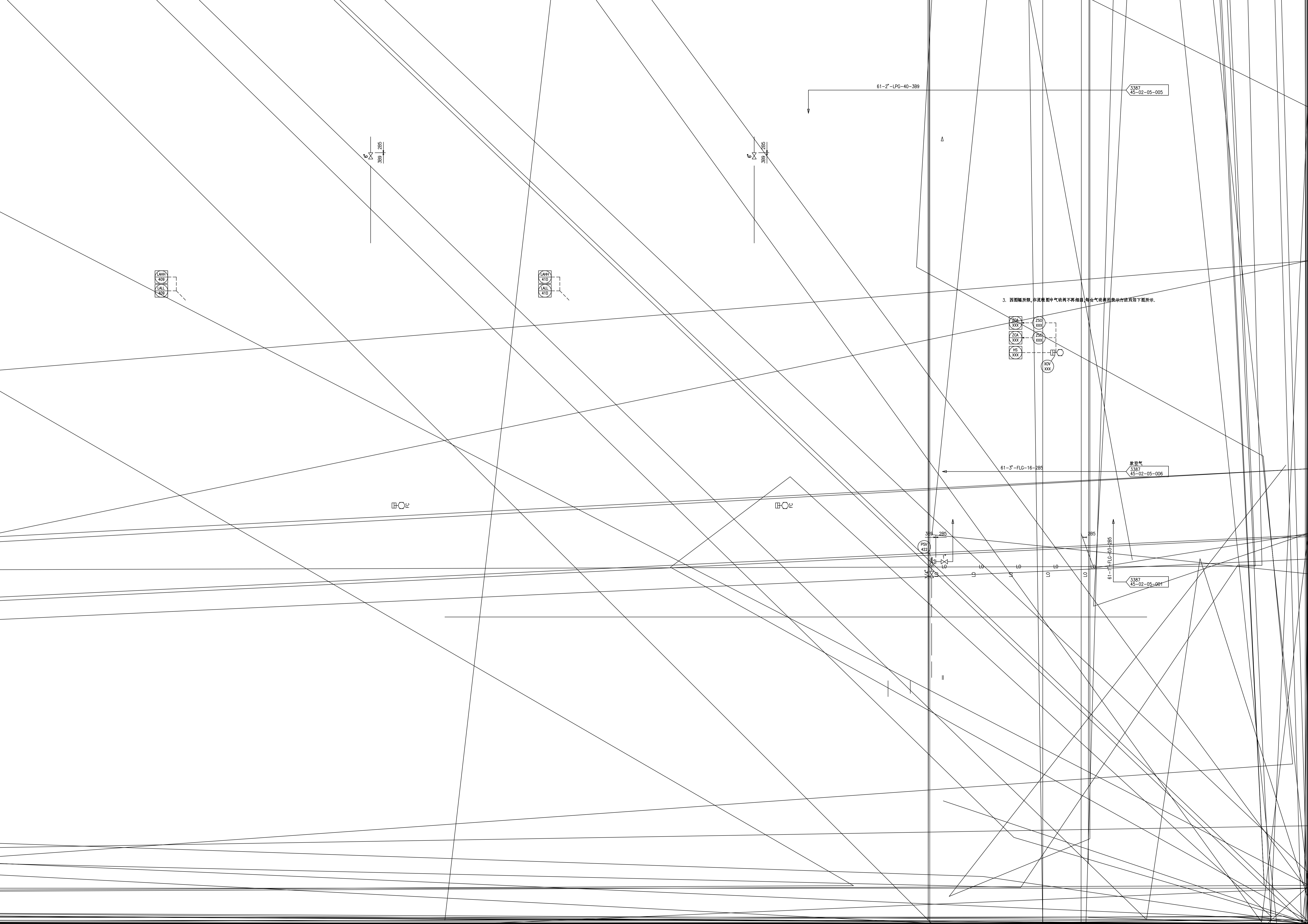
61-6"-LPG-06-389

LPG 特種
33
45-02-05-002



LAMB
437
LALL
437

LAMB
438
LALL
438



61-2'-LPG-40-389

3387
45-02-05-005

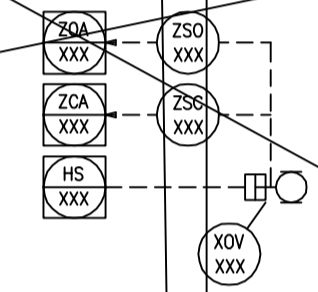
389 285

389 285

LAPP
410
LAL
410

LAPP
410
LAL
410

3. 因篇幅所限, 本流程图申气功再不再细画, 每个气功再的表示方法如下图所示.



61-3'-FLG-16-285

3387
45-02-05-006
放空气

田O

田O

389 285

285

61-1'-FLG-03-285

3387
45-02-05-001